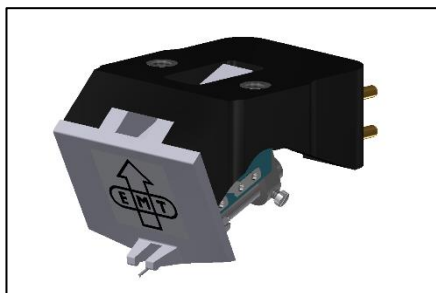


## DATASHEET MC-CARTRIDGE



TSD 75 SPH

TSD 75 SFL

TSD 75 G

Stereo cartridge with magnesium/aluminium body

Discontinued 2018

Specification	TSD 75 SPH	TSD 75 SFL	TSD 75 G
Diamond:	SPH 15µm	SFL	GyS
Cantilever:	Aluminium		
Transducer:	MC Stereo		
Magnet:	AlNiCo, nickel-plated		
Body:	Aluminium, black anodized, magnesium inlay		
Connection:	1/2" - 4pin		
Weight:	12g		
Tracking force:	2,4g		
Output voltage:	1.05mV @ 5cm/s		
Compliance:	12µm/mN		
Frequency response: ±2dB:	20 - 20'000Hz 40 - 12'500Hz	20 - 25'000Hz 40 - 12'500Hz	20 - 30'000Hz 40 - 12'500Hz
Impedance:	2x 24Ω		
Recommended load:	200 - 300Ω		
Successor:	HSD 006		
<b>Nomenclature</b>			
TSD:	Tondose Stereo Diamond		
75:	75 <sup>th</sup> anniversary edition		
SPH:	Spherical diamond shape		
SFL:	Super Fine Line diamond shape		
GyS	Gyger S diamond shape		